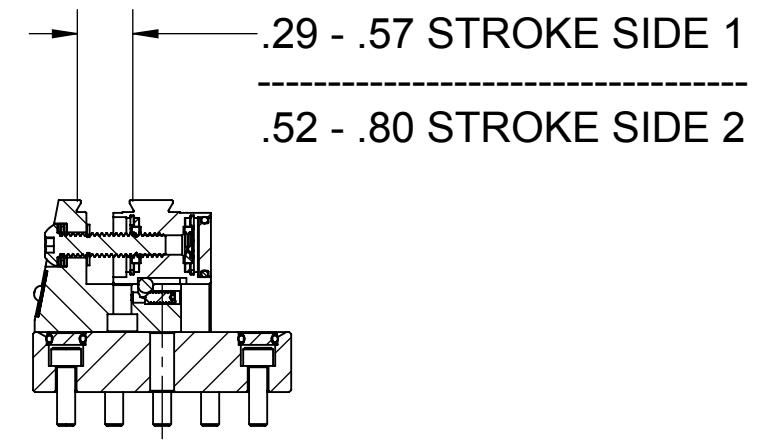
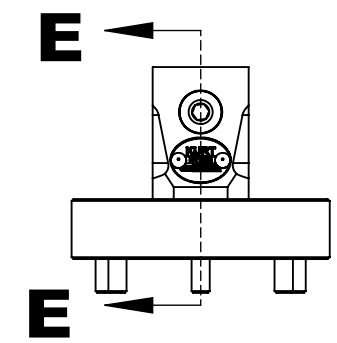
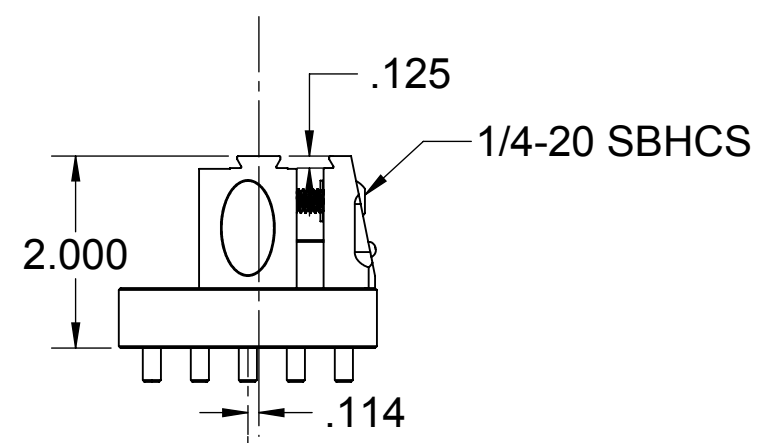
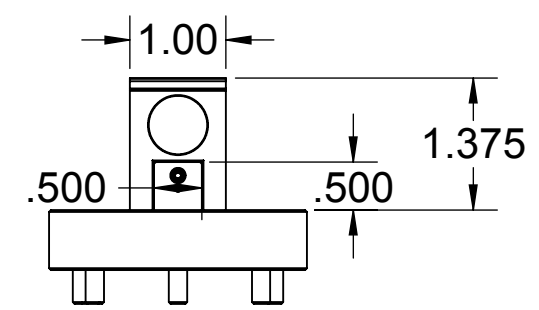
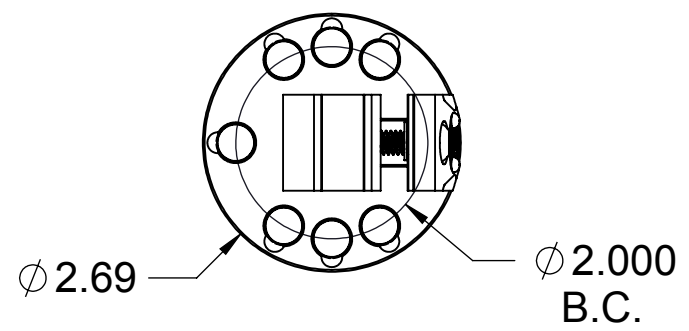
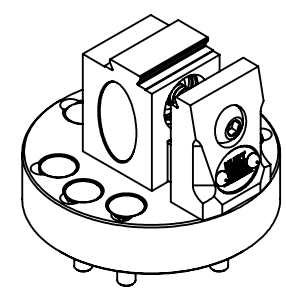
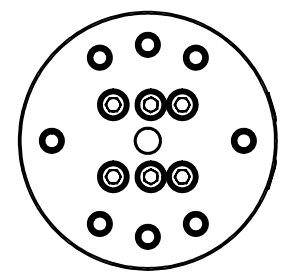


REV	ECD	DESCRIPTION	DATE	BY
A	V4014	RELEASED	1-20-15	DLS
B	V4086	SEE ECD	4-13-16	DLS



SECTION E-E
SCALE 1 : 2

CLAMP FORCE:
 30 I.P. = 360 CLAMP FORCE (LB)
 60 I.P. = 760 CLAMP FORCE (LB)
 90 I.P. = 1350 CLAMP FORCE (LB)
 120 I.P. = 1900 CLAMP FORCE (LB)
 150 I.P. = 2580 CLAMP FORCE (LB)



Q:\Product Drawings-CAD\1Vise\Dovetail Vise\DTR10 6-17-15\

 KURT MINNEAPOLIS	WQ- TOLERANCES UNLESS NOTED INCHES DECIMAL .X ± .05 .XXXX ± .0005 .XX ± .02 ANGLES ± 1° .XXX ± .005	TOOL NAME DOVETAILED REVERSABLE 1.00	MODEL OF TOOL -
	DESIGNED D. SCHMIDT 1-20-15	TITLE DTR10 DOVETAILED VISE CATALOG DWG	DWG. SIZE B
	Detailed D. SCHMIDT 1-20-15	DESCRIPTION OR MATERIAL SEE DRAWING	KURT DWG. NO. B21253
	CHECKED		REVISION LEVEL B
APPROVED		CUSTOMER DTR10	CUSTOMER PART NO. DTR10
		TOOL NO. -	SCALE 1:1
			SHEET 1 OF 1